

Speakers from:

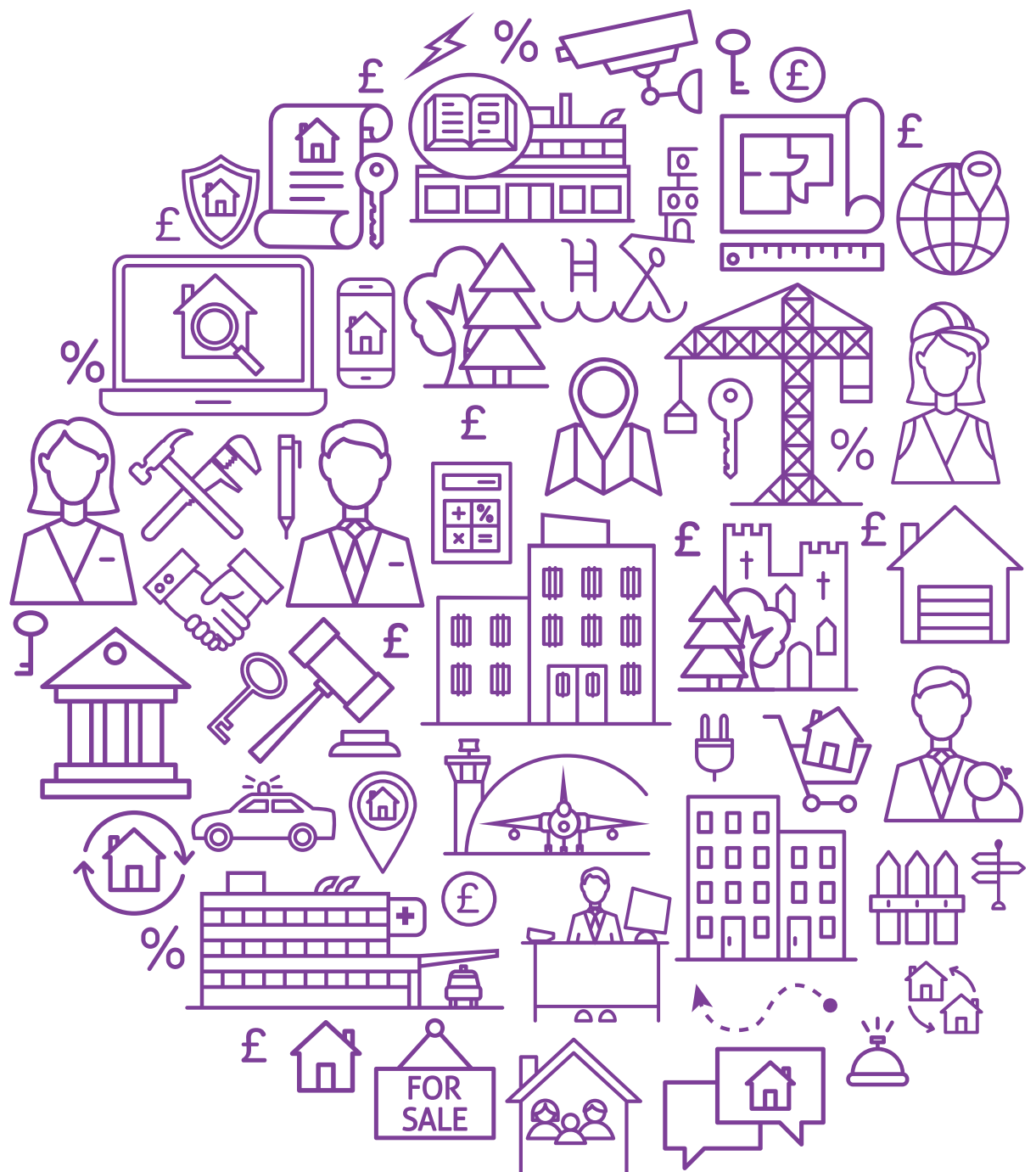


Office of
Government
Property



Government Property 26

Driving renewal, reform and value



An event by:



Timetable

A sessions take place in Mountbatten room (6th floor). **B** sessions take place in Abbey room (4th floor). A 10 minute break between sessions allows for moving between these rooms when necessary. Refreshment and lunch breaks take place in the exhibition area.

| | | |
|-------|--|--|
| 08:30 | Registration | |
| 09:30 | Plenary | Mountbatten, 6 th floor |
| 11:00 | Refreshments and networking | Exhibition area, 5 th floor |
| 11:30 | 1A The Social Infrastructure Roadmap: Progress, Purpose, and Future Opportunities Presented by AtkinsRéalis | Mountbatten, 6 th floor |
| | 1B One-size-fits-none: why standardised workspace management is holding back Central Government estates Presented by Matrix Booking | Abbey, 4 th floor |
| 12:10 | 2A Collaborative Delivery in Action: Optimising Public Assets through Partnership Presented by SCAPE | Mountbatten, 6 th floor |
| | 2B From Cupboards to Data Centres: Unlocking Value by Retiring Server Rooms Presented by Crown Hosting Data Centres | Abbey, 4 th floor |
| 12:40 | Lunch and networking | Exhibition area, 5 th floor |
| 13:40 | 3A Making Heritage Work Harder: Modernising assets and maximising value Presented by Purcell | Mountbatten, 6 th floor |
| | 3B PFI - The challenge and the opportunity Presented by Arcadis | Abbey, 4 th floor |
| 14:20 | 4A Unlocking the full potential of New Towns: Creating value for the public estate Presented by AECOM | Mountbatten, 6 th floor |
| | 4B Building Bridges: Public-private partnerships Presented by Mills & Reeve | Abbey, 4 th floor |
| 14:50 | Refreshments and networking | Exhibition area, 5 th floor |
| 15:20 | 5A Building Tomorrow's Property Leaders: Developing the Skills and Capabilities for Mission-Led Delivery Presented by Cabinet Office | Mountbatten, 6 th floor |
| | 5B Mind the gap between design and delivery: how to bridge the chasm and build workplaces that perform Presented by Government Property Agency | Abbey, 4 th floor |
| 15:55 | From Insight to Impact: Key Takeaways and Next Steps | Mountbatten, 6 th floor |
| 16:15 | Drinks reception | Exhibition area, 5 th floor |
| 17:15 | Conference close | |

Welcome

#GovProp
#GovProperty26

An event by



Public Sector Connect
Lockside Mill
St Martins Road
Marple
Stockport
SK6 7BZ

0161 482 7850
enquiries@publicsectorconnect.org
www.publicsectorconnect.org

All details in this conference brochure were considered to be correct at time of publication. The organisers reserve the right to change or cancel any details. Whilst every care is taken to ensure that all published information is accurate, Public Sector Connect accept no responsibility for any errors or omissions.

We are delighted to welcome delegates, speakers and sponsors to Government Property 26, the latest in this series of events going back twenty plus years.

Thanks are due to all the organisations and individuals who have advised, assisted and supported us, especially:

- Cabinet Office, Office of Government Property, Government Property Agency and Ministry of Defence.
- Conference chair Lynda Rawsthorne, Cabinet Office.
- All of the speakers for their time and willingness to share their experiences and expertise.
- The exhibitors and sponsors – it is because of them that public sector delegates can attend our events free of charge. Please take the time to meet them at their stands.

We trust that all delegates will find this event informative, useful and interesting. We wish you an enjoyable day as you reconnect with old acquaintances and create new networks, and hope that you can join us for the drinks reception in the exhibition area at the end of the day.

Forthcoming events:

Local Authority Property & Estates 2026 – Thurs 30th April, thestudio, Manchester

Government Property Strategy Update 2026 – Thurs 10th September, thestudio, Manchester

Government Property Awards 2026 – Weds 23rd Sept, One Great George Street, Westminster

NHS Property 2026 – Tues 10th November, One Great George Street, Westminster



Chair:
Lynda Rawsthorne

**Government Head of
Property Profession,
Cabinet Office**

Lynda is head of the Government Property Profession, the community of property professionals across government.

She provides professional leadership across a diverse range of government departments and arms-length bodies which deliver the government's property ambitions.

Lynda is responsible for the Government Property Strategy and the Government Property Functional Standard. The strategy sets out the government's plans for a public sector estate for public benefit, ensuring it enables the best possible public services, is efficient and sustainable and supports the government's levelling up ambitions. The Functional Standard sets expectations for how government property is acquired, managed and disposed of.

Lynda has over 25 years' professional experience across the property lifecycle including valuation, managing estates as well as delivering transformational and construction-based programmes. A Fellow of both the Royal Institution of Chartered Surveyors and the Association of Project Management, Lynda is a graduate of the Major Project Leadership Academy at the University of Oxford.



Hadleigh Standen

**Deputy Director of
Property Programmes,
Office of Government
Property, Cabinet Office**

Hadleigh is the Deputy Director for Property Programmes in the Office of Government Property (OGP) where he has

responsibility for the OGP FM standards, tools and policies and leads a team working cross government to drive collaboration and innovation in tackling the condition challenges and improving the resilience of the government estate including leading the response to the NAO and PAC on the condition of government property.

Prior to this Hadleigh spent 3 years in the Government Commercial Function as part of the Strategic Partnering Programme, working with government Strategic Suppliers in the Built Environment. Before joining the Cabinet Office, he spent over 20 years working in industry where he held senior roles with a number of large FM suppliers delivering services to the public sector. Hadleigh is also a fellow of the RICS.

***Building the Foundation for Growth:
Strategic Estates and Public Service Reform***

This presentation will explore how resilient, optimised, and suitable estates are fundamental to delivering the government's missions for national renewal and public service reform, examining the critical intersection of estates strategy with wider government priorities, including the National Infrastructure Strategy, the Balance Sheet Framework, and the Strategic Asset Review announced in the Budget.



Rebecca Jones

Infrastructure Strategy and Policy, Ministry of Defence

Rebecca leads on infrastructure strategy and policy in the Ministry of Defence. Her team has responsibilities for any policy that impacts Defence's infrastructure and

property – whether that policy is to do with Defence's people, the environment, energy, or the use of land. She also works with NATO on infrastructure – both the NATO Security Investment Programme and the development of resilience concepts.

Rebecca joined Defence after a decade in industry, including with Procter & Gamble and Amazon.

Playing Monopoly in 2026: Building an Infrastructure for Defence that can pass go

Defence manages one of the UK's largest, most complex, and consequential estates – and modernising it is essential to national security and resilience. Following the Strategic Defence Review, the MOD is going through a period of renewal – including of its infrastructure. We are reforming how we plan and deliver programmes, creating value through better data, adopting modern delivery approaches, and ensuring decisions are made to support the whole-life of an asset.

In this presentation, Rebecca will explore Defence's game plan – how it is resetting the board, upgrading its pieces, and changing the rules – to ensure its sizable estate is fit to support a country which may need to fight a war, either tomorrow or in the distant future.



Mark Chivers

Government Chief Property Officer, Cabinet Office

Mark joined the Cabinet Office as Government Chief Property Officer in January 2022. Mark is responsible for providing senior, strategic leadership for the whole cross-government

property function. He works with a wide range of senior stakeholders within government and in the wider public sector promoting the intelligent use of property to deliver better public services at lower cost to the taxpayer.

Mark provides strategic leadership for the Government Property Function, and holds senior leaders accountable to the Government Functional Standard. He leads on major change programmes, supporting the delivery of better and more integrated public services, overseeing – among others – the Places for Growth programme and supporting the regional growth agenda.

Property for National Renewal: Delivering on Government Missions and the Plan for Change

Mark will set out the strategic landscape for public sector property, examining how property can serve as a powerful enabler of national renewal. Drawing on the government's mission-led approach and the Plan for Change, Mark will explore how the property estate can support economic growth, rebuild Britain's infrastructure, break down barriers to opportunity, and contribute to clean energy ambitions – outlining the key challenges and opportunities facing property leaders and how the profession must evolve to meet them.

Work sessions

1A

11:30

The Social Infrastructure Roadmap: Progress, Purpose, and Future Opportunities

Presented by AtkinsRéalis

Mountbatten, 6th floor

- ▶ **Stephanie Walters, Sector Head Central Government, AtkinsRéalis**
- ▶ **Jonathan Saks, Chief Economist, National Infrastructure and Service Transformation Authority (NISTA)**
- ▶ **Terry Stocks, Director Strategic Programmes, AtkinsRéalis**
- ▶ **Ron Lang, Regional Director, Project and Programme Advisory, AtkinsRéalis**

The Social Infrastructure Roadmap, a key component of the 10-Year Infrastructure Strategy, aims to transform the way we plan and invest in

social infrastructure. Under NISTA's leadership, it will build a clearer picture of the existing estate, identify future needs, and explore more efficient ways to deliver the collective investment pipeline. This session will review progress to date, what these developments mean for government departments and the wider public sector, and the potential challenges and opportunities ahead. Panellists will discuss how this approach supports more strategic, holistic, and systems-based decision-making, breaking down silos and aligning investment with long-term social outcomes.

1B

11:30

One-size-fits-none: why standardised workspace management is holding back Central Government estates

Presented by Matrix Booking

Abbey, 4th floor

- ▶ **Matt Bailey, Workplace Analytics Specialist, Matrix Booking**

The way people work has changed dramatically in recent years, driven by hybrid working policies, shared hubs and the need to right-size the government estate. Yet many still rely on standardised workspace models, limited data and assumptions that no longer reflect how offices are used, or who they are used by.

In this session, Matt Bailey explores why one-size-fits-all workspace management approaches

create risk in complex, multi-department estates. Drawing on primary research from IT and workplace decision-makers across the public sector and beyond, he highlights where inefficiencies undermine utilisation, employee experience and confidence in estates decisions.

Matt will then outline a practical path forward: one that replaces guesswork with evidence, supports secure shared working, and enables configurable, human-centred workplaces that align with policy, value-for-money and long-term estates strategies.

2A

12:10

Collaborative Delivery in Action: Optimising Public Assets through Partnership

Presented by SCAPE

Mountbatten, 6th floor

- ▶ Pritesh Parmar, Snr Business Development Manager, SCAPE
- ▶ Jonathan Stewart, Public Sector Advisory, Gleeds
- ▶ Oliver Watson, Managing Director, Overbury
- ▶ Christine Peppiatt, Head of Estates Planning & Accommodation, Transport for London

This panel examines delivery of Transport for London's Lost Property Office as a practical example of effective public-private partnerships

working to support property strategy. The project showcases strong asset management, innovative procurement and successful stakeholder collaboration, offering a scalable model for the future. Speakers will discuss how these approaches have enabled asset optimisation, operational resilience and whole-life value, and how partnership-led delivery aligns with the Government Property Strategy by improving performance, efficiency and long-term sustainability of public assets.

2B

12:10

From Cupboards to Data Centres: Unlocking Value by Retiring Server Rooms

Presented by Crown Hosting Data Centres

Abbey, 4th floor

- ▶ Michael Ferris, Central Government & ALBs, Crown Hosting Data Centres

Server rooms are often overlooked, yet they quietly drive up costs, carbon emissions, and limit flexibility across the public sector estate. This session explores how moving servers into purpose-built data centres can cut emissions

by up to 99%, reduce running costs by 66%, and unlock valuable space for other uses.

We'll share practical examples and outline how the Cabinet Office partnership, Crown Hosting, makes the transition straightforward—helping estates teams deliver real savings and progress towards net zero.

12:40

Lunch and networking Exhibition space, 5th floor

Work sessions

3A

13:40

Making Heritage Work Harder: Modernising assets and maximising value

Presented by Purcell

Mountbatten, 6th floor

- ▶ **Peter Buist, Partner, Purcell**
- ▶ **Andrew Dobson, Partner, Purcell**

With growing pressures to modernise heritage assets, the panel will discuss how councils are tackling decarbonisation, modernisation,

and condition challenges, using data and surveys to priorities investment and make informed decisions on disposals and reinvestment. Learn how strategic reuse can preserve heritage, improve efficiency and future-proof your assets.

3B

13:40

PFI – The challenge and the opportunity

Presented by Arcadis

Abbey, 4th floor

- ▶ **Nigel Herbert, Head of Practice – Asset Optimisation, Arcadis**
- ▶ **Dave Hallam, Senior Director, Arcadis**
- ▶ **Louise Loewenson-Williams, Head of Estate Controls, DVLA**

With the clock ticking on hundreds of PFI contracts due to expire in the next decade, proactive planning and collaboration is crucial to effectively navigating the challenges (and opportunities) involved in the hand-back process. Success will require a multi layered

approach aligning aspects of commerciality with deep asset and service knowledge that goes way beyond normal "business as usual" operations. The session will look to cover the following:

- What are the risks at hand-back and why is it crucial to be proactive? What steps should be taken in response;
- What approaches best balance long-term asset stewardship, service performance and value for money in a post-PFI landscape?

4A**14:20****Unlocking the full potential of New Towns:
Creating value for the public estate**

Presented by AECOM

Mountbatten, 6th floor

- ▶ Patrick Clarke, Masterplanning Lead UK+I, AECOM
- ▶ Chris Law, Central & Local Government Lead, UK+I, AECOM
- ▶ Katherine Hosea, Project Director, London Legacy Development Corporation
- ▶ Katy Lock, Director of Communities, Town and Country Planning Association

As government advances plans for the next generation of New Towns, the public sector has a crucial opportunity to deliver homes, transform places and enhance productivity across the public estate. These developments provide a platform to enable communities to thrive, shaping services, assets and infrastructure to support economic activity

and realise key objectives of the Government Property Strategy. This panel session will focus on how the planning and delivery of New Towns can maximise benefits for both new and established communities: creating healthier, prosperous and connected places with sustainable outcomes. It will explore how integrated infrastructure planning can fully unlock the vision for each new town, how risk can be more effectively managed across delivery partners, and how the evolution of New Town delivery should seek to strengthen local services and enhance the public estate. Gain insights from influential experts as they discuss how to harness this opportunity of new towns to deliver meaningful, long-term value across the nation.

4B**14:20****Building Bridges: Public-private partnerships**

Presented by Mills & Reeve LLP

Abbey, 4th floor

- ▶ Hannah Cheminais, Partner, Mills & Reeve LLP

This session will explore how collaboration between public bodies and private enterprises drives property development,

regeneration, and economic growth. Join Hannah for a 30-minute session as she discusses the benefits and challenges for both the public and private sector working together to deliver the development and infrastructure needed.

14:50**Refreshments and networking** Exhibition space, 5th floor

Work sessions

5A

15:20

Building Tomorrow's Property Leaders: Developing the Skills and Capabilities for Mission-Led Delivery

Presented by Cabinet Office

Mountbatten, 6th floor

- ▶ **Lynda Rawsthorne, Government Head of Property Profession, Cabinet Office**

Join Lynda Rawsthorne for an interactive session exploring how we develop the property profession to meet future challenges. This session will examine the skills, capabilities, and mindsets needed to

deliver ambitious government objectives, from technical excellence to strategic thinking and collaborative leadership. Lynda will outline the profession's development priorities and facilitate discussion on how we can collectively strengthen capability across government property teams to drive better outcomes for citizens and places.

5B

15:20

Mind the gap between design and delivery: how to bridge the chasm and build workplaces that perform

Presented by Government Property Agency

Abbey, 4th floor

- ▶ **Sam Carey-Smith, Head of Workplace Design, Innovation and Assurance, GPA**
- ▶ **Carly Ersser, Director of Workplace Services, GPA**

Great workplaces don't happen by accident – they're born from an alchemy of smart design and seamless delivery. This session explores how to close the gap between vision and reality, creating spaces that boost productivity,

wellbeing and collaboration. Sam Carey-Smith will share insights on designing flexible, inclusive environments that stand the test of time, while Carly Ersser reveals how to turn those plans into high-performing workplaces through data-driven delivery and technology. Together, they will discuss how bridging design and delivery can bring offices to life, transforming them into vibrant hubs where people actually want to work and boost productivity and wellbeing.

15:55

From Insight to Impact: Key Takeaways and Next Steps

Mountbatten, 6th floor

- ▶ **Lynda Rawsthorne, Government Head of Property Profession, Cabinet Office**

Lynda Rawsthorne draws together the day's key themes and practical insights, setting out how the property profession will turn today's learning into tomorrow's action.

16:15

Drinks reception Exhibition space, 5th floor

17:15

Conference close

Please note that agenda, session times and speakers are subject to change

Drinks reception 16:15



Join us in the exhibition space (5th floor)
for the end of conference drinks reception



Delivering transformational outcomes for a better world

AECOM is the world's trusted infrastructure consulting firm, partnering with clients to solve their complex challenges. Guided by our Sustainable Legacies strategy and a culture of digital innovation, we deliver integrated solutions that strengthen communities, enhance infrastructure resilience, and advance sustainability.

Our Central Government team brings extensive experience across the entire public sector estate, providing advisory and design services including:

- Programme, Project and Cost Management
- Architecture
- Workplace Design
- MEP and C&S Engineering
- Energy Transition
- Sustainability Solutions

From advising on initial business case governance to strategic planning, programme management, and seamless project delivery, we collaborate with our clients in both central and local government to help them realise their goals.

With a proven track record in delivering meaningful social value, decarbonisation, and measurable improvements in ESG, we help public sector clients achieve ambitious goals while uplifting communities and safeguarding the planet. Our commitment to technical excellence and understanding of our key stakeholders ensures we deliver tailored, innovative solutions that drive impactful results.

To find out more about how we can support your organisation, please contact Chris Law, Central Government Lead, UK&I: chris.law@aecom.com

aecom.com



Arcadis is the leading global design and consultancy firm for natural and built assets, founded in 1888. Our purpose is simple — improving quality of life. Today, in an ever-changing world, that purpose has never been more important.

Clients meet their goals by experiencing our trademark deep market sector insights and collective design, consultancy, engineering, project and management services from our 36,000 people. We work with them to deliver exceptional and sustainable outcomes throughout the lifecycle of their projects.

As a commitment to our 'people first' stance, we work on projects that are aimed at achieving both sustainability and business goals to help build more livable cities.

We support UN-Habitat with knowledge and expertise to improve the quality of life in rapidly growing cities around the world through our Shelter program. This has seen more than 2,200 Arcadians participate in at least one of the 100 Shelter missions in 31 countries since 2010.

By creating solutions that grow and adapt, especially with the help of digital tools, we can tackle major societal problems. Whether it's our projects, local communities, or work with clients, we aim to improve people's lives and contribute to overall progress.

Amir Baharlou, Central Government Sector Leader
amir.baharlou@arcadis.com

www.arcadis.com/en



We're AtkinsRéalis, a world-leading design, engineering and project management organisation

AtkinsRéalis has been a trusted advisor to the UK Government since our founding in 1938. Our world-leading design, engineering, technical advisory and project management teams deliver critical infrastructure projects across the UK, making a positive impact to communities.

We are proud of our collaborative relationships and reputation for delivery excellence across our Government clients. We understand the impact Government has on leading the way on sustainable, inclusive, innovative solutions and are committed to working in partnership with our clients to deliver these, with integrity and safety as our guiding values.

Our relationship with UK Government is deep rooted and together, we are impacting every part of our society.

We work across Transportation, Nuclear, Buildings & Places, Water, Mining & Minerals, Defence, Industrial and Power & Renewables sectors. AtkinsRéalis supports our Public Sector clients to realise projects that keep our communities safe, healthy, educated and resilient.

Our talented people, including many who have first-hand experience working in the Public Sector, lead projects at every stage of the lifecycle. Using the full capability across AtkinsRéalis, we support Central Government clients with every step of the journey from defining the project need to operation and maintenance.

Stephanie Walters
stephanie.walters@atkinsrealis.com
020 7121 3054



Crown Hosting is a unique partnership between the Cabinet Office and Ark Data Centres, created to provide secure, sustainable data centre facilities for the UK public sector. As a shared service, it allows any public sector organisation – or its private sector suppliers – to access pre-procured, purpose-built facilities through the Crown Hosting Framework (RM6262).

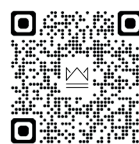
By bringing together demand from across government, Crown Hosting gives every organisation access to the scale and buying power of the entire public sector. This means market-leading pricing, state-of-the-art facilities and favourable terms – whether you need a single cabinet or an entire data hall.

Crown Hosting has supported over 200 organisations, helping them reduce costs, cut carbon emissions, and free up valuable estate space. Current customers save an estimated £1.5b and 33,000 tonnes of carbon each year by moving IT infrastructure out of inefficient



on-premises server rooms and into highly resilient, energy-efficient data centres. Crown Hosting supports digital transformation, estate rationalisation, and net-zero goals – providing a trusted platform for modernising public sector infrastructure. Some of our benefits include:

- Up to 67% cost savings
- 75% energy reduction
- 100% renewable energy
- Procurement already completed via RM6262
- Supports Cloud First Journey
- AI-ready infrastructure
- Flexible contracts and pay-as-you-use power.



0333 207 0703
info@crownhostingdc.co.uk
www.crownhostingdc.co.uk



KBR Estates Intelligence: Maximising Public Value with Assured Estate Management

Public sector leaders face unique challenges in managing large real estate portfolios: balancing strict regulatory compliance, achieving sustainability goals, and ensuring transparency and accountability, all within constrained budgets. With decades of proven success in government and public sector estates management, KBR Estates Intelligence delivers the expertise and solutions needed to optimise your assets and achieve your objectives.

As part of our advanced VIAverse platform, we integrate validated data and cutting-edge technology to streamline operations, reduce operational waste and maximise the value of your real estate portfolio. Our solutions empower you to make data-driven decisions, ensuring compliance with government regulations, meeting sustainability targets and supporting transparent, accountable estate management.

We understand the complexities of public stewardship, from fiscal responsibility to the need for efficient supply chain management. Our tailored approach enhances decision-making, reduces costs and ensures your assets deliver maximum public value, aligning with your organisation's commitment to sustainable growth and efficient service delivery.

Partner with KBR Estates Intelligence to transform your estates into strategic enablers of long-term success. Visit our website, or conference stand to explore how we can support your mission of effective, sustainable public estates management.

kbr.com/estates-intelligence
ei@kbr.com
01372 862865



Kier's purpose is to sustainably deliver infrastructure that is vital to the UK. We are a leading provider of infrastructure services, construction, and property developments, committed to delivering for communities and leaving lasting legacies through our work.

At Kier we have the full breadth of capability to support any stage of an asset's lifecycle. At the core of our project delivery is our 360 approach. We deliver projects and programmes of all sizes, from the development of land to design and construction, through to maintaining and operating the asset.

Our 360 approach embodies who we are and how we operate. Collaborative, trusted and focused, we combine national reach, local delivery and engineering excellence.

Kier Construction comprises our regional building, strategic projects, and Kier Places businesses. As a leading UK national contractor and a strategic supplier to the UK government, we work with clients across a number of sectors, including education, healthcare, justice and borders, defence, and commercial. Our capabilities include:

- Design, planning and costing
- Capital building works
- Property maintenance and facilities management programmes
- In-house self-delivered mechanical and electrical model
- Decarbonisation and retrofit
- Fire safety and compliance.

www.kier.co.uk



LocatED is an arm's length body of the Department for Education, providing expert commercial property advice across the education and government sectors. Since 2017, we have worked at pace to deliver estates solutions, acquire sites for new schools, and accelerate decarbonisation programmes throughout England.

Our track record speaks for itself. We have acquired 239 sites, creating over 121,000 new school places. We have saved the public purse more than £78 million and generated £140 million in capital receipts for the exchequer. Our mixed-use development projects are delivering thousands of school places alongside new homes, and our Net Zero Accelerator programme – winner of the 2025 Government Property Award for Sustainability – is helping decarbonise an education estate that accounts for 37% of public sector building emissions.

When RAAC threatened to close school buildings, we mobilised rapidly, supporting 106 schools and delivering 168 modular classrooms to keep children learning. We have also provided strategic property advice to over half the FE colleges in England.

In September 2025, the government announced that LocatED will transfer into the Department for Education from April 2026. Our commercial property expertise will continue to support the education estate from within the Department.

www.located.co.uk



Unlock the full potential of your hybrid workplace with Matrix Booking, a specialist provider of desk, room, and resource management software for the UK public sector

For over a decade, Matrix Booking has helped Central Government, Local Authorities, and Health organisations deliver effective, future-focused workplace strategies. Our technology underpins some of the UK public sector's most innovative programmes, from the development of shared hub networks to the ongoing shift towards flexible and hybrid working.

Matrix Booking is a cloud-based suite designed to make workplaces easier to use and more efficient to run. It offers desk and meeting room booking, resource booking (including car parking and EV chargers), visitor management, workplace sensors, analytics dashboards, and seamless integrations with platforms such as Microsoft 365 and access control systems. Organisations can procure the full suite or individual modules directly or via the G-Cloud framework.

Working with major hub providers including the Government Property Agency, HMRC, DHSC, and the Ministry of Justice, Matrix Booking powers the UK's largest resource management network. Supporting over 8,500 meeting rooms and 50,000+ workspaces, it enables more than 150 public sector organisations to securely share and manage their estates every day.

Contacts us

Central Government:
kieron.murphy@matrixbooking.com
07502 683391

Local Government and NHS:
matt.etherington@matrixbooking.com
07950 801 865

MILLS & REEVE

Mills & Reeve LLP is a leading national law firm and a Lot 1 (Core Legal Services) and Lot 2 (Major Projects and Complex Advice) supplier on the CCS RM6360 Legal Services Panel, further solidifying the firm's standing as a seasoned legal adviser to government clients.

We support government departments and non-departmental public bodies with a range of property issues, including: acquisitions; disposals; estate rationalisations; Crown, commercial and residential real estate; development and construction law; dispute resolution and litigation; PFI expiry; freehold, leasehold and licence arrangements; investment; management; non-complex finance and investment; heat networks and other energy projects; tax; landlord and tenant issues; planning law and environmental law.

Contacts:

hannah.cheminais@mills-reeve.com

christian.bull@mills-reeve.com

robbie.turner@mills-reeve.com

What sets us apart?

- **Our strong firm culture** helps us naturally produce outstanding service, delighted clients, and committed and happy people
- We “mix and match” our **value-added offerings** to meet each client's individual requirements.
- **We invest time (for free)**, getting to know your team, your systems, your requirements and your objectives.
- Through our **hand-picked network of M&R Global relationship firms**, we can support you with your projects in Scotland, Northern Ireland and around the world.
- **Our market-leading online Procurement Portal** offers a host of free-to-use resources, including our Procurement Act Notices Flowchart Infographic, Procurement Act Notices Generator and our much-loved Standstill Calculator.

www.mills-reeve.com



Overbury – Public Sector Workplace Specialists

Overbury is a specialist fit-out and refurbishment contractor with extensive experience delivering projects across the public sector. Our portfolio spans local and central government, blue-light services, job centres, housing associations and NHS trusts. As organisations adapt to new ways of working, the role of the workplace in attracting and retaining talent has never been more critical. We help public sector clients create environments that are efficient, flexible and supportive of their people.

We partner with organisations to manage public sector real estate through capital projects, minor works and lifecycle programmes. Our focus is on long-term partnerships, not just individual projects. Dedicated delivery teams are built around each client, bringing specialist expertise and trusted suppliers tailored to exact requirements.

Fit-out and refurbishment is all we do. With delivery teams across the UK, we manage projects of all sizes, including lifecycle programmes, infrastructure upgrades, strip-outs and the creation of modern, adaptable workplaces.

We successfully deliver 97% of our projects in occupied environments, minimising disruption to business as usual. Social value sits at the heart of our approach, with strategies aligned to client objectives and local priorities. The majority of our work is repeat business, and we maintain one of the highest recommendation rates in the industry.

emma.keyse@overbury.com
07813 141 723

penelope.mitchell@overbury.com
07896 630 824



Smart building management platform for CRE & FM

Planon is the leading global provider of Facility and Real Estate Management software. More than 3,250 organisations are already using our IoT-enabled solutions to effectively manage their buildings, infrastructure and facilities; saving costs, meeting governance and sustainability goals and creating attractive and engaging workplaces.

Planon Integrated Workplace Management Solution is a proven, innovative, easy-to-use IWMS platform. Its open platform architecture also supports you in

connecting and embedding the latest smart building technology offered by our extensive network of tech partners for optimal management of your building and workplace portfolio.

Talk to us for an open conversation about your FM & CRE operations, your goals, challenges and priorities, and find out how a Planon solution could work for your organisation.

Web: www.planonsoftware.com
Email: info-uk@planonsoftware.com
Tel: 01273 823557



Purcell brings public buildings to life; shaping their future through innovation and design

We are a specialist practice of architects, masterplanners and heritage consultants. With an extensive background in adaptive reuse and retrofit of historic buildings and sites across a range of heritage designations. Purcell has undertaken a broad spectrum of projects of national and regional significance. We are dedicated both to the care and development of historic places and the creation of innovative new buildings in sensitive contexts.

Our approach is to maximise the value of existing buildings through reuse and adaptation by assessing development potential, identifying opportunities and constraints and delivering strategies for decarbonisation, environmental sustainability, commercial return and social value.

We work by understanding the context and uncovering the stories of a place, by discovering what has gone before, assessing where that place is now and imagining what it can be in the future. We are experts in stakeholder consultation and working with local communities. We can take an idea, develop it and follow it through a full cycle of a project.

Contact: info@purcelluk.com
Visit: purcellarchitecture.com



SCAPE is one of the UK's leading public sector procurement authorities, dedicated to creating spaces and places that leave a sustainable legacy within the community. Owned by, and managed for, the benefit of the public sector, SCAPE provides time and cost-effective support throughout the design, development, and construction process.

Since 2006, SCAPE has supported over 12,000 projects across the UK with their compliant, competitively tendered frameworks. Working closely with 24 industry-leading partners, SCAPE is currently performance managing over 1,800 live projects.

Our suite of consultancy, civil engineering, construction and utilities frameworks have achieved Gold Standard verification through Constructing Excellence and the highest level of compliance for the Carbon Reduction Code.

Our team can support you with:

- Policy and strategic advice
- Estate management and asset optimisation
- Financing advice and business case development
- Designing and building new net zero buildings
- Decarbonising and optimising the performance of existing buildings
- Reduction of whole life carbon emissions and construction waste.

Andrew Bannister
National Key Accounts Manager
07976 209 163
andrewb@scape.co.uk

general@scape.co.uk
0800 669 6565
scape.co.uk



Valuation Office Agency

District Valuer Services (DVS), the specialist property arm of the Valuation Office Agency (VOA) provides independent, impartial, valuation and professional property advice across the entire public sector, and where public money or public functions are involved.

As a public body, we understand the challenges and demands of today's property issues. We are committed to delivering a high level of service to our clients and work closely with them to provide tailored solutions to deliver their requirements.

You can reduce procurement costs and time by using DVS through a direct award under the Crown Commercial Service (CCS) Estates Professional Services framework RM6168 and Welsh Government Estates Framework (SEWTAPS).

DVS Property Specialists for the Public Sector

With extensive experience across central, regional, local, and devolved government, health, environment and transport and infrastructure sectors we provide a comprehensive range of services, including:

- Capital and Rental Valuations
- Asset Valuations for Financial Accounting Purposes
- Development Viability Consultancy and Advice
- Compulsory Purchase and Compensation Advice and Valuations
- Disposal and Acquisition advice
- Building surveying services, including insurance & dilapidations.

To find out how VOA can help you with your requirements, visit our stand or contact:

E-mail: clientdevelopment@voa.gov.uk
Web: www.voa.gov.uk/dvs



Creating Sustainable Value in Infrastructure

Vercity is a leading provider of asset and financial management, project finance, and professional services, supporting clients across the built environment for nearly three decades. Operating from offices in the UK and Canada, we manage 93 infrastructure estates with a combined capital value of over £30 billion and oversee £4.2 billion in annual cash transactions.

Our team of more than 420 professionals delivers expertise across asset management, financial management, and advisory services, including capital delivery and project management, strategic property, commercial, and technical advice. We help investors, asset owners, and occupiers unlock sustainable, long-term value from complex, long-life assets.

Established in 1997 as a specialist PFI and PPP developer, Vercity has played a pivotal role in landmark projects, including the Queen Elizabeth Hospital, Barts & The Royal London and MOD Main Building. Our portfolio spans healthcare, defence, education, transport, renewable energy, student accommodation, social housing and government sectors, with a proven track record in delivering positive social impact and achieving carbon neutrality.

Vercity is committed to quality, sustainability, and information security. We bring fresh thinking, collaborative partnership, and a focus on sustainable solutions to every engagement, ensuring our clients' objectives are met and their assets deliver lasting value.

www.vercity.com



Today's conference is brought to you by Public Sector Connect. Through our events, Public Sector Connect are dedicated to addressing the many diverse challenges faced by the UK public sector and in particular, the senior level individuals and teams charged with implementing the challenges.

Our strong relationships developed over many years with a wide range of organisations and key individuals within central government, local government, NHS and the wider public sector give us a unique insight into the many complex issues at the heart of modern-day government.

Our aim is to ensure that we provide the right environment for the greatest communication, learning and sharing of best practice to take place. Our events provide thought provoking plenary speakers, debates, and informal, interactive case-study based seminars.

If your public sector organisation has a requirement for an event or you have a case study you are keen to share at one of our conferences please get in touch to see if we can help you.

E-mail: enquiries@publicsectorconnect.org
Visit: www.publicsectorconnect.org

An official event of:

Scan to book:



10th September | thestudio | Manchester

As part of Government Property Month 2026, the Government Property Strategy conference returns for the fourth year running, bringing together the authors of the strategy and leaders in Government Property – including representatives from Government departments, the NHS, and Local Government – alongside senior public sector property professionals to discuss, debate and hear the latest updates on progress.

Delegate places are free of charge for senior public sector property professionals. Places are allocated on a 'first come, first served' basis and must be booked in advance.

Don't miss out! Scan the QR code (top-right) to secure your place.



For more information contact Sharon Quinn
squinn@publicsectorconnect.org | 07917 166 326



Speakers from:

Scan to book:



30th April • thestudio • Manchester

For many years, the Local Authority Property & Estates conference has been a cornerstone of the public sector property calendar, bringing together leading experts, high-profile speakers, and influential voices from both public and private organisations.

As local authorities face increasing pressure from budget constraints, climate commitments and rising public expectations, this conference offers a vital opportunity to share knowledge, explore solutions, and connect with peers. Delegates will hear from experts in local and central government, the wider public sector, and partner organisations providing innovative solutions.

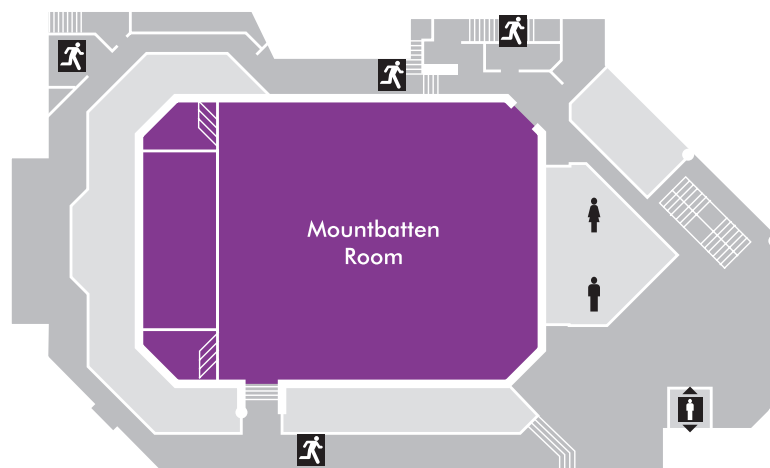
Don't miss out! Scan the QR code (top-right) to secure your place.



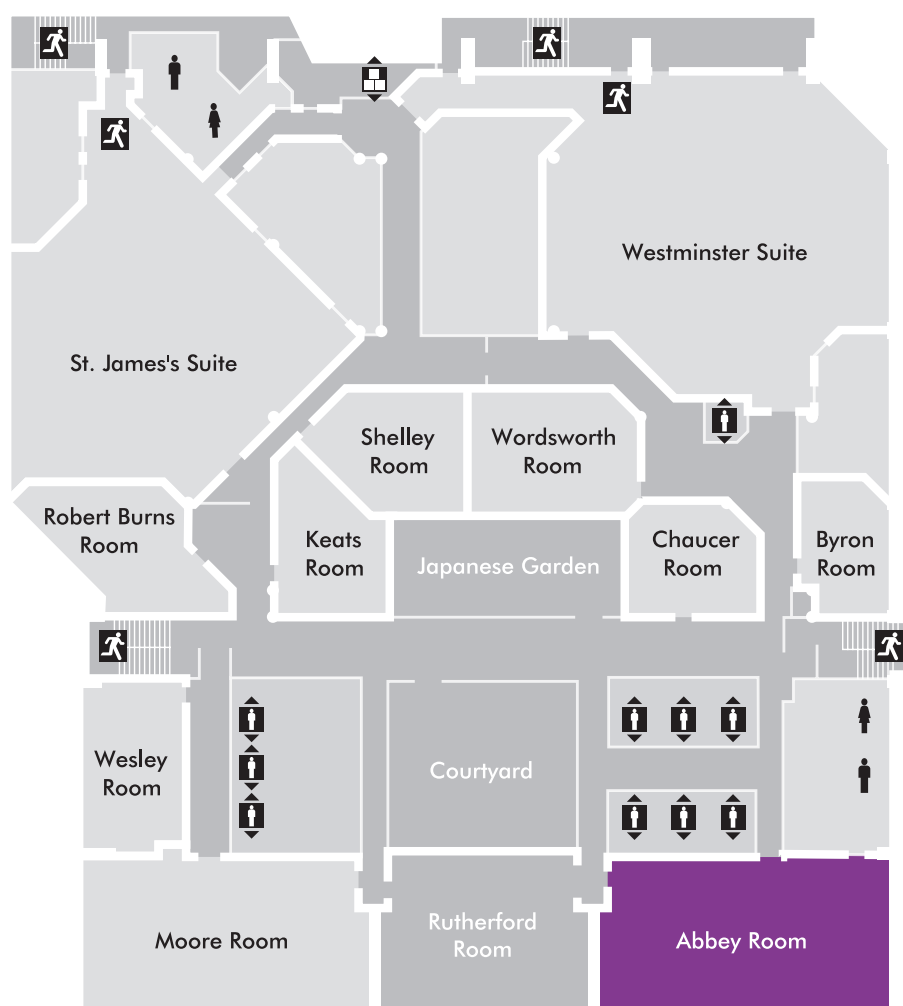
For more information contact Sharon Quinn
squinn@publicsectorconnect.org | 07917 166 326



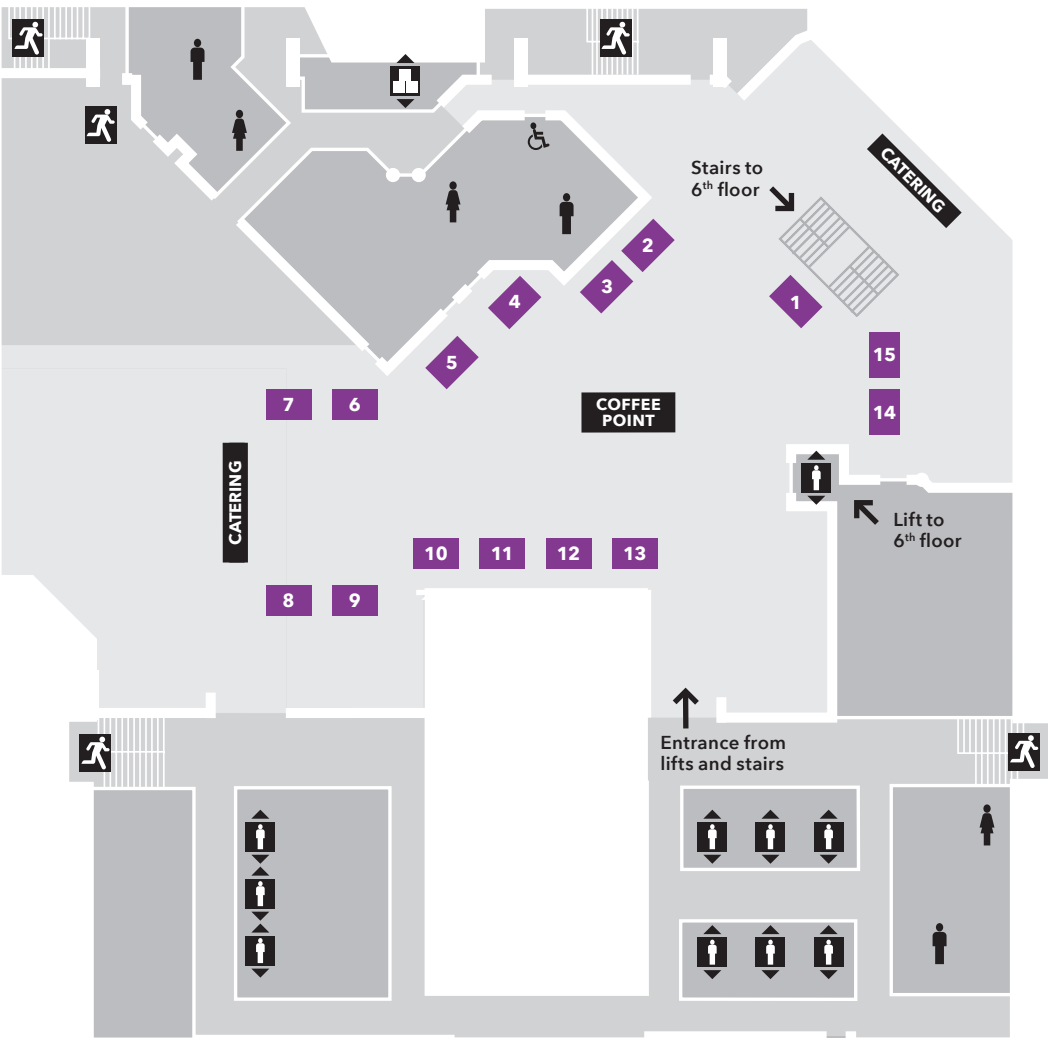
Plenary / **A** Sessions **Mountbatten, 6th floor**



B Sessions **Abbey, 4th floor**



Exhibition space 5th floor



| | | | |
|---|-----------------------------|----|----------|
| 1 | Matrix Booking | 9 | Vercity |
| 2 | AECOM | 10 | Planon |
| 3 | Crown Hosting Data Services | 11 | KBR |
| 4 | AtkinsRéalis | 12 | Arcadis |
| 5 | LocatED | 13 | JLL |
| 6 | Purcell | 14 | Overbury |
| 7 | Kier | 15 | SCAPE |
| 8 | Valuation Office Agency | | |

An official event of



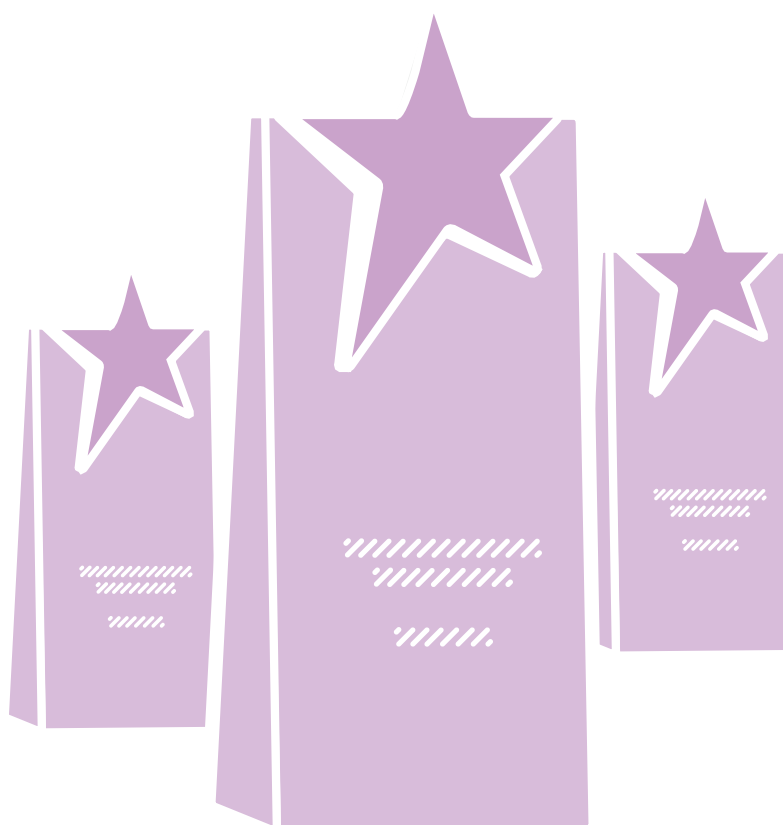
Government
Property
Function



Cabinet Office

Government Property Awards 2026

Wednesday 23rd September | One Great George Street, Westminster



As part of **Government Property Month 2026**, this year's official Government Property Awards are to be presented at the beautiful One Great George Street building in Westminster, providing a unique opportunity for property professionals from across the public sector to celebrate successes and to recognise individuals and teams that have made a real difference.

The awards will soon be open for nominations, so now is the perfect time to start thinking about the outstanding work you and your colleagues have delivered over the past year. With categories recognising everything from Rising Stars and Sustainability achievements to Community Impact, there's an opportunity to celebrate excellence across the profession.

For details on how to submit your nominations keep an eye on: gpp.civilservice.gov.uk
For sponsorship or judging enquiries email Sharon Quinn: squinn@publicsectorconnect.org